



# Coupon Activation

# Coupons Overview:

## Where to Find What You Need

### 1 Contents

1	Contents.....	2
2	License Application Procedure .....	4
2.1	Acquire JASON software. ....	4
2.2	Apply for a license. ....	4
2.3	Enter the coupon code. ....	5
2.4	Confirm the application of the coupon. ....	6
2.5	Enter the customer information.....	6
2.6	How to acquire a computer ID .....	8
3	License Authentication Procedure .....	11
3.1	Enter and activate the license. ....	11
3.2	Confirm that the license has been authenticated. ....	11
4	OFFLINE ACTIVATION (If online license authentication cannot be completed)	13
4.1	How to acquire a request token.....	13
5	Support .....	15

*This document describes the setup procedure of JEOL Analytical Software Network (JASON) software using the coupon code. To use the software, you need to acquire and authenticate a license key. Apply for the license key from the JASON web portal according to the procedure described in this document.*

*Before starting the coupon activation procedure, please check the following steps have been completed:*

- *Perform the application procedure on the English page (<https://www.jeoljason.com/>).*
- *The coupon attached to the instrument at the time of delivery should be used within one year after delivery.*
- *The type of license that can be applied for using the coupon is the "annual license (single)".*
- *One license is necessary for each PC that you use.*
- *If you apply for a license according to the setup guide, your account is created on the web portal. Only one account can be created per email address. If the representative manages all the licenses, that representative may apply for a license for each PC using the one account.*



*If you already have an account, you can check the registered computer ID and the license status on the 'My account' page of <https://www.jeoljason.com/my-account/>*

## 2 License Application Procedure

### 2.1 Acquire JASON software.



Download the latest JASON software from the standard software DVD purchased from JEOL or download the latest version of the software from the JASON web portal to your PC.

JASON web portal: <https://www.jeoljason.com/download-jason/>

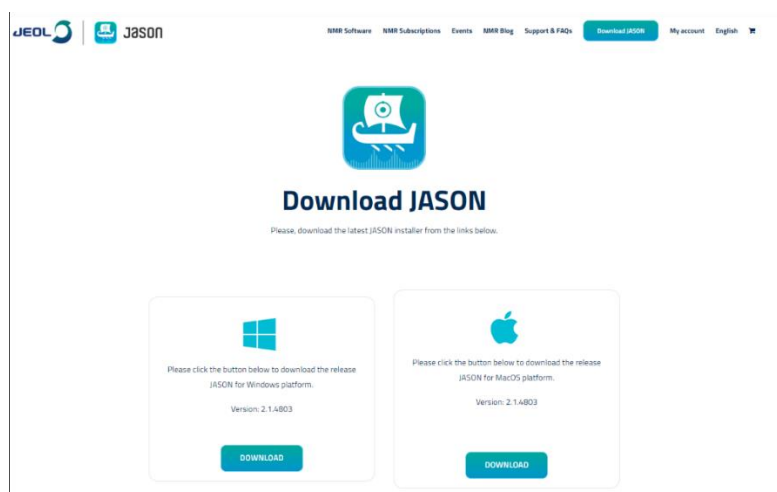


Figure 1: JASON web portal: software download screen

### 2.2 Apply for a license.

- I. From the menu at the top of the web portal, select NMR Subscriptions – JASON Subscriptions. The product page appears as shown in **Figure 2**.



Figure 2: JASON web portal: menu items

- II. Select an appropriate subscription for the type of facility you belong to; "JASON Industry – Single 1 Year", or "JASON Academia – Single 1 Year".

III. Click on the Add to cart button.

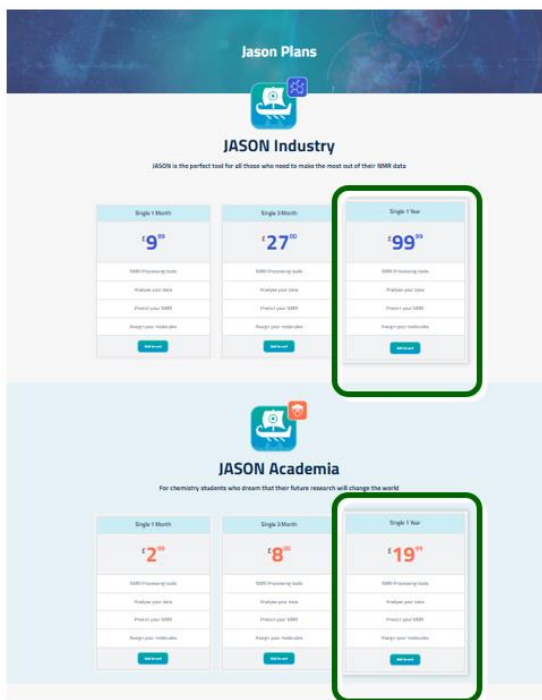


Figure 3: JASON web portal: product selection screen

2.3 Enter the coupon code.

- I. Check the cart total (product model and quantity), and then enter the coupon code.
- II. Click the Apply coupon button.

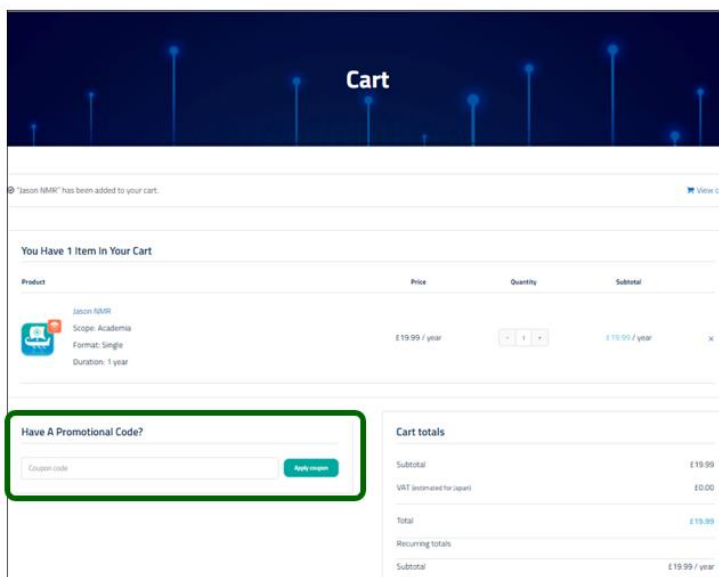


Figure 4: Cart total check screen

## 2.4 Confirm the application of the coupon.

When the coupon has been successfully applied, the message "Coupon code applied successfully." appears at the top left.

- I. Confirm that the payment by coupon has been completed (Figure 1.5-1).
- II. Click the Proceed to checkout button at the bottom right of the page.

The view switches to the "Checkout" page.

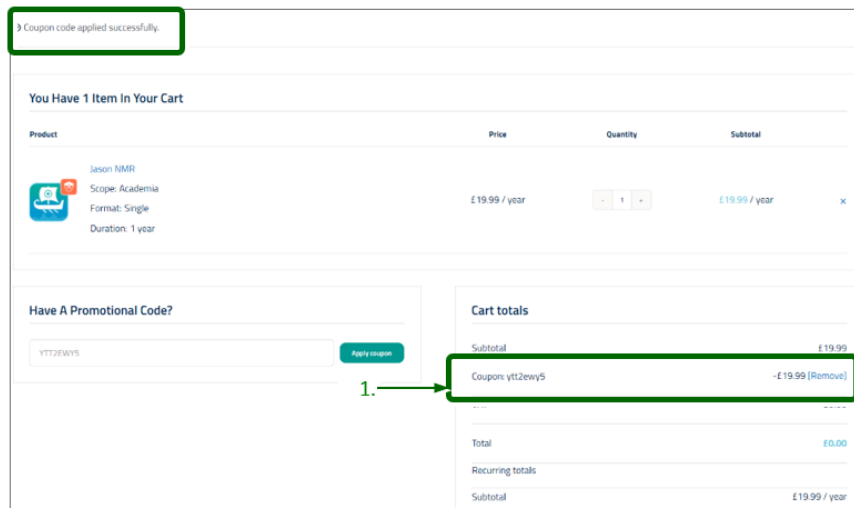


Figure 5: Coupon detail confirmation screen

## 2.5 Enter the customer information.

- I. Enter all the required information.

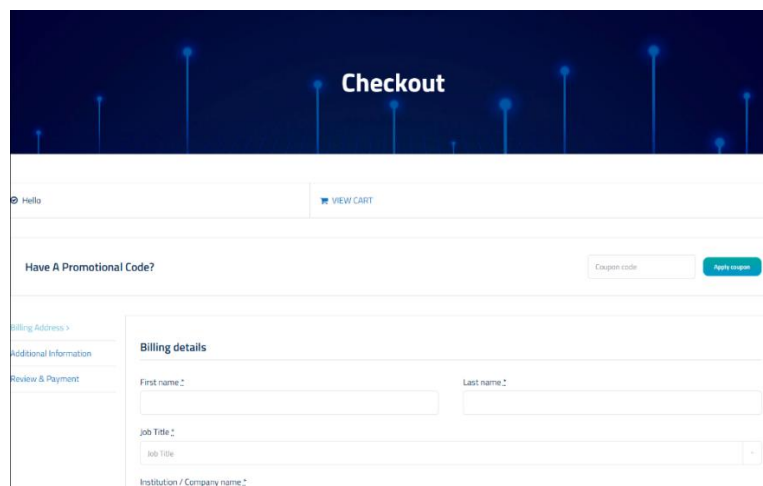







Figure 6: Customer information entry screen

-  Enter the coupon code again.
-  The information you entered will be required when applying for a license and creating an account page.
-  You can also enter the items in Japanese.
-  The Computer ID is the information concerning the PC on which the JASON software is used.

## 2.6 How to acquire a computer ID

I. Start up the downloaded JASON software. The "Jason License" dialog box appears as shown in **Figure 8: Computer ID entry screen**.

 If the dialog box does not appear automatically, you can find it by selecting About JASON – JASON Licenses in the main menu, as shown in **Figure 7: Opening the "JASON License" dialog box**.

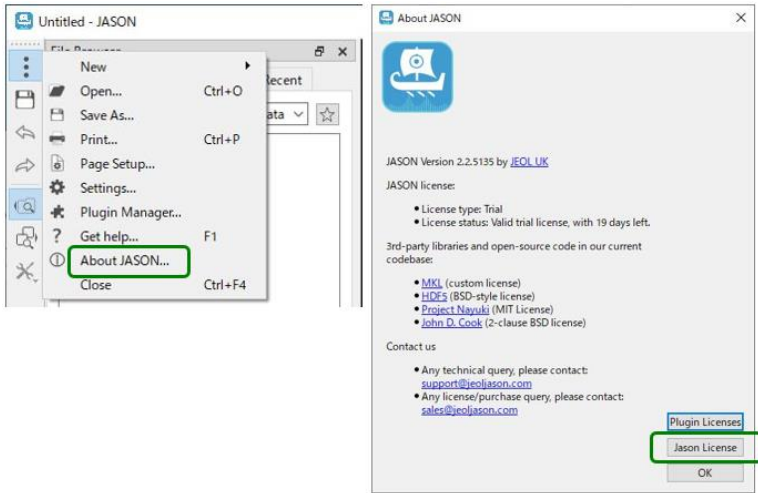


Figure 7: Opening the "JASON License" dialog box

II. Select the items shown below, and then click the Copy button.

License Type:	Commercial
Company Type:	Select the same type as in Section 2.2 Step II
Term:	1 Year
Usage for:	Single

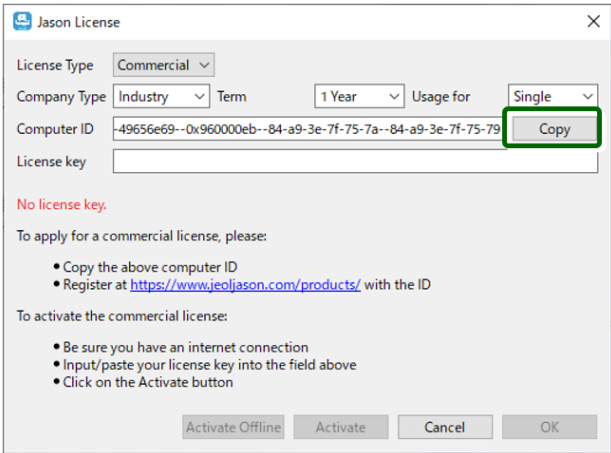
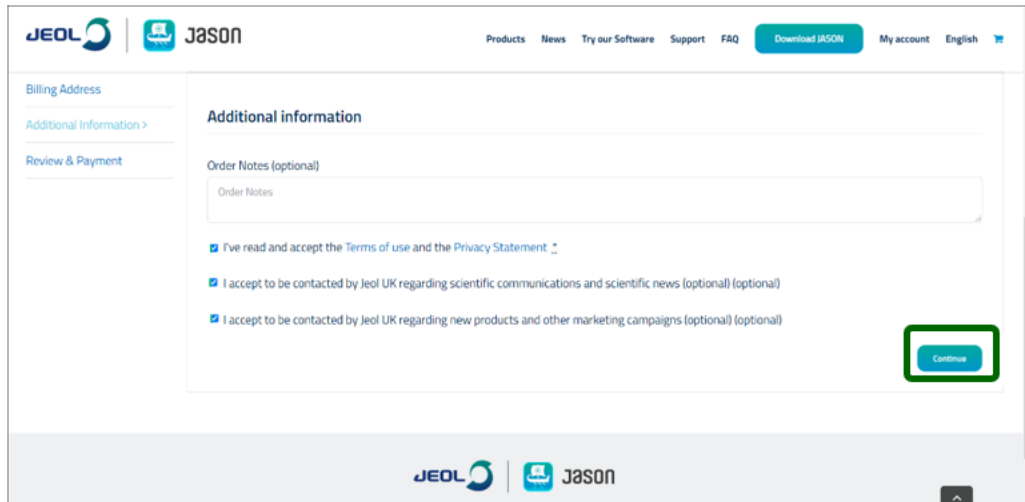


Figure 8: Computer ID entry screen



- III. Paste the Computer ID to the Computer ID box in the customer information entry screen on the JASON Web Portal page.
- IV. Check the entered information is correct and then click the Continue button at the bottom right.
- V. Confirm the additional information on the web page as shown in **Figure 9**.



**Figure 9: Additional information entry screen**

- a. After confirming each item, select the corresponding check box.

***The following three items of additional information must be confirmed:***

- *I've read and accept the Terms of use and the Privacy Statement (mandatory).*
- *I accept to be contacted by JEOL UK regarding scientific communications and scientific news (optional).*
- *I accept to be contacted by JEOL UK regarding new products and other marketing campaigns (optional).*

- b. Click the Continue button, the view switches to the next screen.

- VI. Final confirmation of the application. After checking the information, click the Sign up now button.

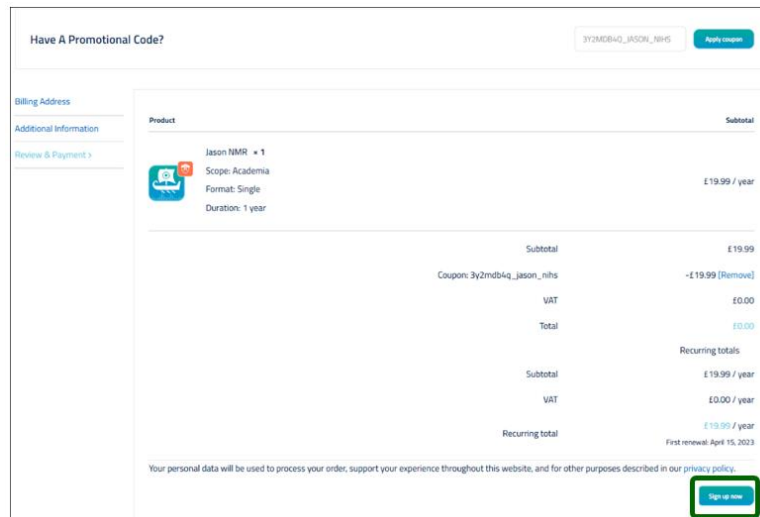


Figure 10: Final confirmation screen for application

VII. Completion of the procedure. The message "Thank you. Your order has been received." appears.

A message containing the following information is sent to the email address that you registered:

- 1) Your account has been created
- 2) Order details
- 3) License
- 4) Invoice

The application procedure is completed at this point.

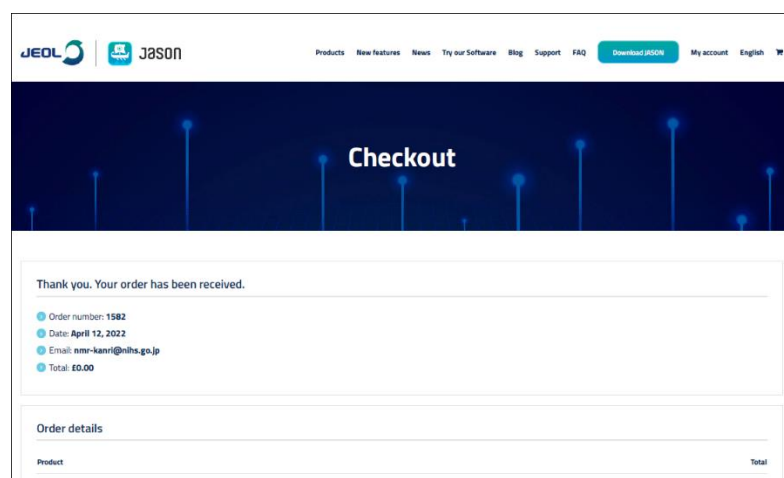


Figure 11: Exit screen

### 3 License Authentication Procedure

#### 3.1 Enter and activate the license.

I. Start the JASON software, the “JASON License” dialog box appears.



If the dialog box does not appear automatically, refer to step I of Section 2.6 “How to acquire a computer ID”

II. Select the items shown below, and then enter the license key in the License Key box.

License Type:	Commercial
Company Type:	Select the same type as in step II of Section 2.2 Apply for a license.
Term:	1 Year
Usage for:	Single
License key:	Copy the license key from the email to this box.

III. Click the Activate button.

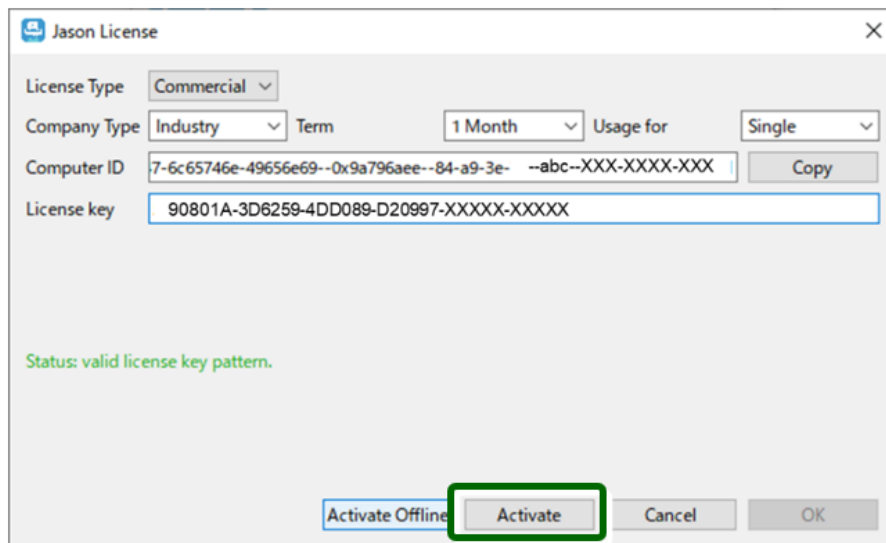


Figure 12: License entry screen

#### 3.2 Confirm that the license has been authenticated.

A message appears indicating that the authentication is successfully completed.

The authentication procedure is completed at this point.

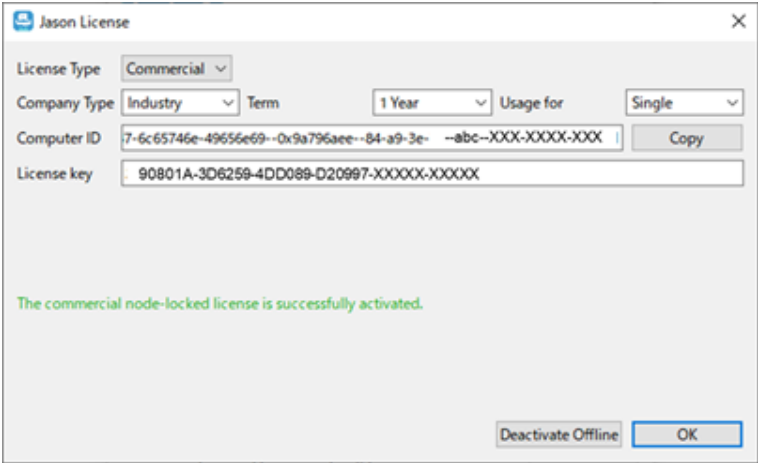


Figure 13: License authentication confirmation screen

## 4 OFFLINE ACTIVATION (if online license authentication cannot be completed)

If online license authentication cannot be completed or offline authentication is desired, perform the procedure described below.

- I. Enter the license key, and then click the Activate Offline button.

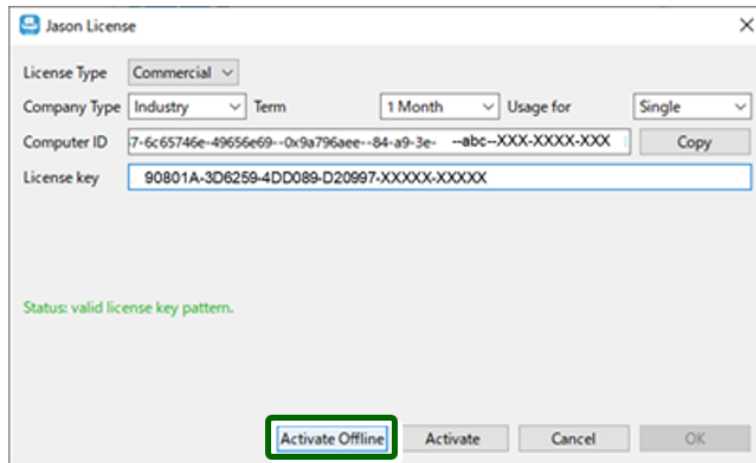


Figure 14: License entry screen

- II. Create a request token according to the directions given on the display.

### 4.1 How to acquire a request token

- I. Select the license type as described below;

Type :	Select the appropriate type for your facility.
License Term :	1 Year
Usage for :	Single

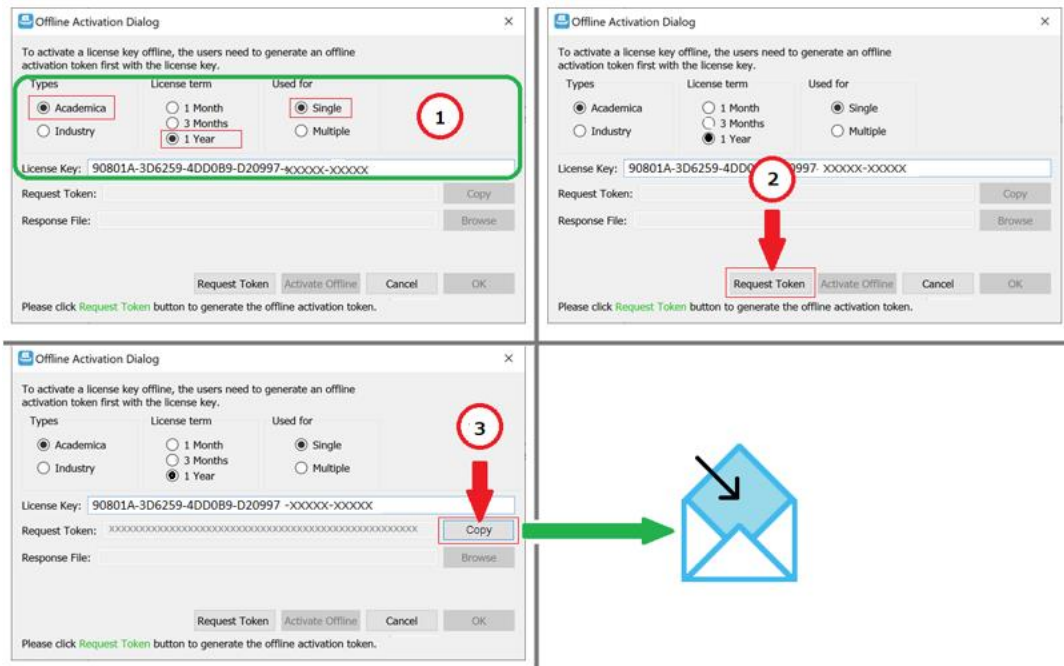



Figure 15: Offline Activation Dialog (example)

II. Use the email address you used for the application to send the request token to JASON support.

JASON support: [support@jeoljason.com](mailto:support@jeoljason.com)

 Message example

Subject: Your license key

Message:

Offline activation request token

☒ Refer to Figure 15 to copy and paste it.

## 5 Support

For more information or questions, contact us at [support@jeoljason.com](mailto:support@jeoljason.com) (English and Japanese).